



Capability Statement

An 8(a) Small-Disadvantaged Business

Over 30 years of experience in Heavy Mechanical, Tool and Die, and Welding Fabrication. We also have the ability to manage field and industrial pumps, valve operations and blowers. Our services include but are not limited to Commercial and Residential Build-Out, Restoration and Site Work, Remediation, HVAC Services, Roofing Contractors, and Maintenance.

General Contracting Work :	Primary NAICS Code:	Secondary NAICS Codes:
<ul style="list-style-type: none">■ Plumbing■ Electrical■ Roofing■ Remodeling■ Cleaning Services■ Change of Occupancy Maintenance	238120-Structural Steel	238190-Welding Fabrication 238990-General Carpentry 238320-Painting 238990-Maintenance and Repairs 561720-Cleaning 238190-Maintenance 236220-Commercial & Institutional Building Construction 236210-Industrial Building Construction 562910-Remediation 238220-HVAC 237110-Water & Sewer Lines & Related Structures Construction 237310-Highway, Street, & Bridge Construction 237990-Other Heavy & Civil Engineering Construction 238150-Glass & Glazing Contractors 238160-Roofing Contractors 541310-Architectural Services 541620-Environmental Consulting Services 561210-Facilities Support Services 562910-Remediation Services 562920-Materials Recovery Facilities
Site Work <ul style="list-style-type: none">■ HVAC System Installation & Design■ Port Dock Walls Renovation■ Metal Pipe Fabrication■ Storm water Drainage Systems Repair■ Sewage Lift Stations Repair		

DUNS Number: 080212464 Cage Code: 7LL61

BDM Industrial Services LLC is a 8 (a) minority small disadvantaged business with capitol and assets sized at \$1.2 million. Over 50% of our work is self-performed with a bonding capacity of up to \$5M per single project and aggregate up to \$10M.

RECENT CONTRACTS

Port of Aberdeen — Aberdeen, MS

Renovations to the docks at the port of Aberdeen for river barge access.

Prairie Hill MB Church — Columbus, MS

Complete construction of 6000 sq ft metal building for Prairie Hill MB Church. This included demolition and removal of the previous burned structure, TOPO, soil testing and soil compaction to ensure solid foundation.

Hunt Military Communities — Columbus AFB, MS

Multilayer vendor performing change of occupancy maintenance between occupants. Roof repairs, HVAC services, sewer lift station services, pump repairs, storm drain repairs and painting.

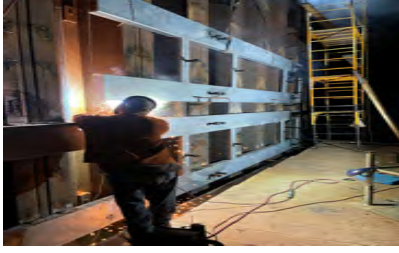
US Air Force — Columbus AFB, MS USACE Omaha District

Subcontractor for CAPE Environmental. Removed 15 ft of 8-inch jet fuel transfer line and replaced with new coated section of pipe. Finished procedure included X-ray testing on welds, soil testing, holiday testing, pressure testing, liquid testing, and soil compaction testing.

GSA Federal Courthouse — Oxford, MS

Repaired multiple damaged paved surfaces located within the parking lot. This included the removal of broken asphalt and replacing with specified materials (Flex Krete).

CORPORATE EXPERIENCE



Building, Welding, & Structural Steel Aberdeen, MS | Aberdeen Port



Rebuild dock wall for docking of river barges. Work included demolition of existing cross ties and metal clips. Then installing c-15 channel and mounting R29X6FT radial tires for softeners.



Structural Steel & Welding Columbus, MS | Prairie Hill Baptist Church

Installation of steel beams for the new construction of Prairie Hill MB Church. Construction involved installing support beams, z-beams, wall beams, installation, and standing seam metal sheathing.



Steel Grating with Pipe Sleeve Columbus AFB, MS | CAFB Fuel Replacement Project



Fabricate and installed stainless steel pipe support and pipe stands, and hand rails for #1,#2,#3 pipe trenches and containment sumps. Modified and replaced gratings with pipe sleeves



US Air Force – Columbus AFB, MS USACE Omaha District Columbus AFB, MS | Fuel Line Repair

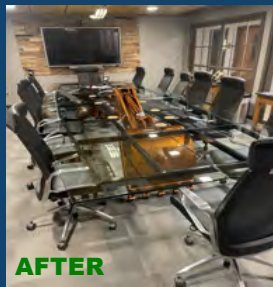
Repair 15 ft of fuel transfer line from storage tanks to flight line.



SPECIALTY WELDING & FABRICATION PROJECTS



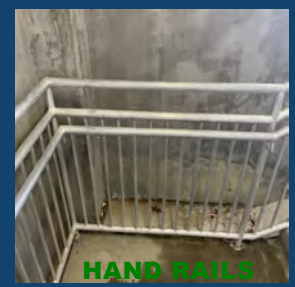
BEFORE



AFTER



DECKS



HAND RAILS

CONTACT US

Bobby McCullough
President/CEO
Bobby@bdm industrial.com
662-549-3055

Dwayne Brown
Sr Vice President
Dwayne@bdm industrial.com
662-352-6303

OFFICE

1197 Hwy 373
Columbus, MS 39705

www.bdm industrial.com